



MARNE & BOIS SOLAR MAP





Context and Challenges

In response to the climate emergency and the objectives set by the Paris Agreement, France aims to increase the share of renewable energy from 20% to 33% by 2030.

The March 10, 2023 law on accelerating renewable energy production requires ambitious local ecological planning.

In this context, Paris Est Marne & Bois (PEMB) is implementing an innovative solar cadastre in partnership with Cythelia Energy—winner of the 2024 IGN call for projects on Lidar data—and Trace Software International, within the framework of an Innovation Contract.

This initiative aims to support the 13 municipalities of the territory in their energy transition and identify renewable energy acceleration zones.



1 Platform for 2 Audiences

Public Space

Citizens and businesses can assess the solar potential of their rooftops and develop their photovoltaic projects.



**TERRITOIRE
DURABLE & INNOVANT**
Paris Est Marne & Bois

Cythelia
energy

Secure Private Space

Municipal staff and PEMB teams benefit from advanced tools to shape public policies and identify the potential of public assets.



An Experimental Territory

The Marne & Bois Solar Map is based on the Archelios MAP solution, developed by Cythelia Energy and Trace Software International.

Our territory will once again serve as a testing ground to pilot three major technological innovations that have never been implemented before.

These innovations will significantly improve the precision of analyses and deliver a higher-quality service to support the development of photovoltaic projects.

Vincennes will serve as the pilot city for the deployment and testing of the platform.

An experimentation phase will take place throughout 2026, in collaboration with the urban planning teams of the municipalities and ALEC MVE, on a twin platform before its final integration into the production version.



VINCENNES



Deployment Timeline

Oct 2025	Launch of the private platform + staff training sessions (Oct 13 & Nov 13)
Nov 2025	Launch of the public platform + business webinar (Nov 18)
2026	Progressive integration of the 3 technological innovations



For more information

Visit : www.parisestmarnebois.fr/fr/marne-bois-solar-map

Future Perspectives and Impacts

The Marne & Bois Solar Map represents a major step forward in supporting territorial energy transition.

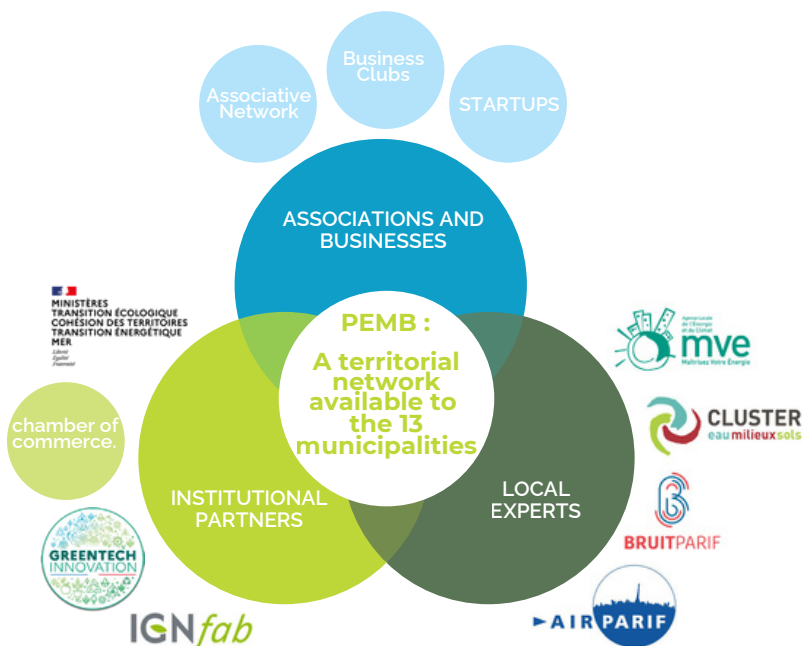
As a recognized solution already deployed in over 85 local authorities, covering 25% of the French population, it helps optimize solar photovoltaic and thermal development.

By facilitating the identification of high-potential zones and offering powerful simulation tools, the project contributes directly to the objectives of France 2030 and the Territorial Climate, Air and Energy Plan (PCAET).

PEMB aims to empower residents and businesses to actively participate in renewable energy production within the territory.

A Project Funded by the "Innovate in the City" Program Metropole du Grand Paris

A partnership ecosystem: expertise at the service of cities in the region



Department of Environment and Ecological Transition – PCAET :
sandra.desousa@pemb.fr - +33 (0)1 48 71 52 93 - +33 (0)7 70 22 02 30
frederique.marquet@pemb.fr - +33 (0)1 84 23 75 48 - +33 (0)6 46 49 75 82

For more informations : <https://greentechinnovation.fr>

<https://www.ign.fr>



Intercommunalité Paris Est Marne&Bois
1 Place Uranie
94340 Joinville-le-Pont
+33 (0)1 48 71 59 00 - accueil@pemb.fr
www.parisestmarnebois.fr



VOUS AVEZ TOUTES LES CARTES
EN MAIN POUR RÉUSSIR

