



EXPERIMENTATION KUMULUS





Context and Challenges

Faced with the challenges of climate change, resource preservation and waste reduction, local authorities must rethink their management methods and encourage innovative solutions.

The KUMULUS WATER project is part of this approach by providing a concrete response to a dual challenge:

- Facilitating access to drinking water in public spaces,
- Reducing plastic use by limiting the consumption of single-use bottles.

It directly contributes to the objectives of the Territorial Climate Air Energy Plan of PEMB and illustrates the concrete implementation of the Sustainable and Innovative Territory strategy: making the territory a laboratory for experimentation in service of ecological transition.



How does it work?

The KUMULUS WATER device transforms air humidity into drinking water, using innovative technology operating 100% on solar energy.

1

Air is captured and its humidity extracted.

2

Water is condensed, filtered and mineralized.

3

It is stored in a secure tank.

4

Users can consume it free of charge on site.

2845 +

Liters produced

108 +

kg of plastic avoided

936 +

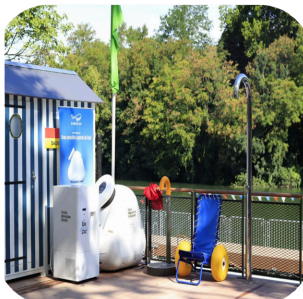
kg of CO2 saved



Atmospheric Fountain Installation Sites

Two swimming sites inaugurated in summer 2025

Maisons-Alfort



Ala Plage
Paris Est Marne & Bois

Joinville-le-Pont



The "AMPHORA": Autonomous Atmospheric Water Generator

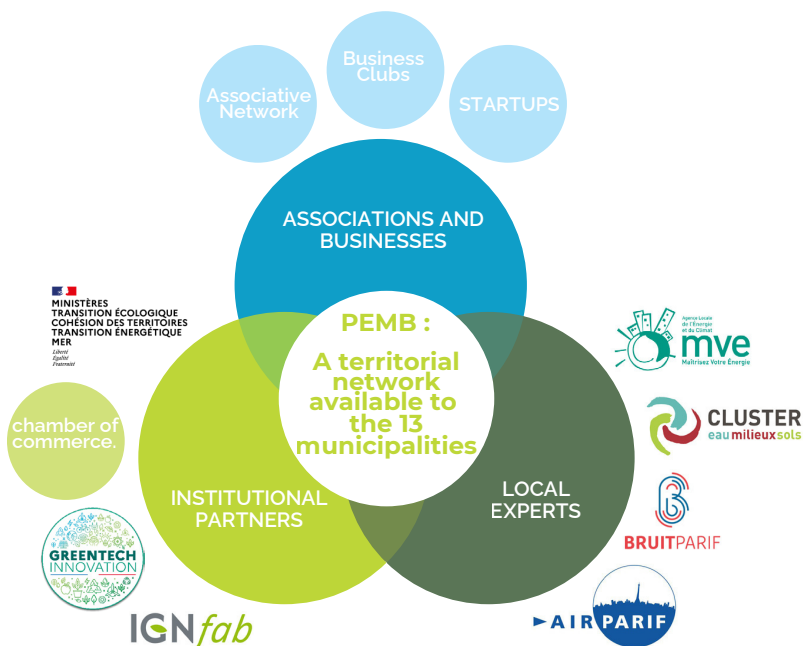


Autonomous and powered by solar energy, this atmospheric fountain provides drinking water from air humidity, without any electrical connection. It thus helps reduce plastic waste while raising awareness among users about more sustainable consumption patterns.

Towards a More Sober and Resilient Territory

By supporting projects like KUMULUS WATER, Paris Est Marne & Bois affirms its ambition: to make its territory a space for innovation, experimentation and cooperation, in service of ecological transition and collective well-being.

A partnership ecosystem: expertise at the service of cities in the region



Department of Environment and Ecological Transition – PCAET :
sandra.desousa@pemb.fr - +33 (0)1 48 71 52 93 - +33 (0)7 70 22 02 30
frederique.marquet@pemb.fr - +33 (0)1 84 23 75 48 - +33 (0)6 46 49 75 82

For more informations : <https://greentechinnovation.fr>

<https://www.ign.fr>



Intercommunalité Paris Est Marne&Bois
1 Place Uranie
94340 Joinville-le-Pont
+33 (0)1 48 71 59 00 - accueil@pemb.fr
www.parisestmarnebois.fr



VOUS AVEZ TOUTES LES CARTES
EN MAIN POUR RÉUSSIR

