



## Challenges and vision

The start-up WaltR, labeled GreenTech and incubated at the Living Lab of the French Ministry of Ecological Transition, Energy, Climate and Risk Prevention, financed by the European Union and implemented notably by Bpifrance and CDC, has applied to the Territoire Paris Est Marne & Bois (PEMB) for the second wave of the call for projects "Demonstrators of frugal AI at the service of ecological transition in territories". This project, named AMELIA, aims to deploy mapping solutions to meet current environmental challenges and respond to the PCAET's axes of stakeholder mobilization, innovation, as well as adaptation to climate change, voted in 2022. AMELIA's ambition is to improve the steering and operational management of public policies, support decision-making and optimize the management of user services, by choosing artificial intelligence.

## AI at the service of municipalities

Loyal to its TDI policy, PEMB has responded favorably to startup WaltR's request to join the consortium and propose experimental territories within its 13 member cities. Using AI, AMELIA will offer dynamic, reliable, fine-scale data on air quality, mobility and noise. To offer dynamic mapping that couples pollutant emission and diffusion models with satellite imagery and innovative sensors, strategically placed across the territory. With frugality as a key priority, the project will draw on existing sensors and promote data sharing, thus reducing the need to add new equipment.



## A high-performance Monitoring and Decision Support System

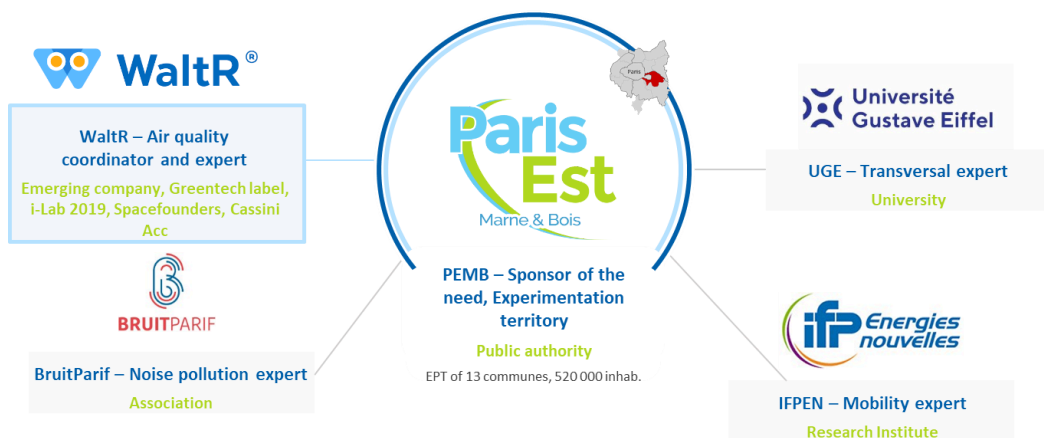
AMELIA is more than just a decision-making tool; it is a genuine regulatory and health monitoring system. The data collected will enable us to observe, analyze, design and adjust local public policies in terms of population health. In this way, local authorities will be able to take relevant and effective action, precisely targeting the problems associated with noise and air pollution.

## A technological approach close to the people

Over a period of 36 months, AMELIA will develop a cartography that is both technological and in line with the population's uses and perceptions, thanks to the various pilots that will be set up locally, with a view to duplicating them on a national scale.

## An Innovative Consortium

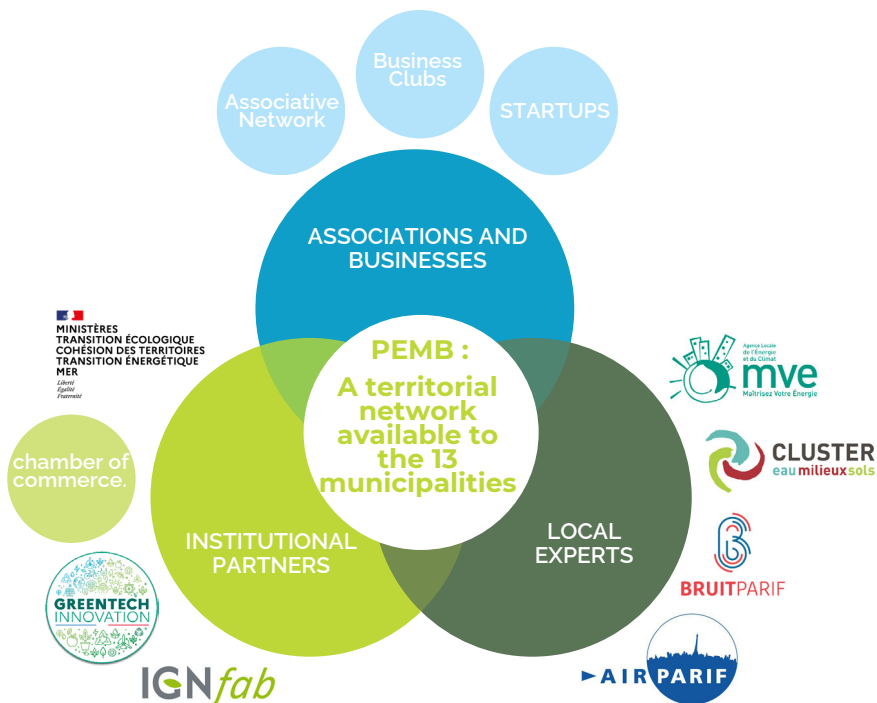
A mixed and dynamic consortium, bringing together experts in research, innovative solutions and public policy implementation. WaltR will act as leader and air quality expert, while BruitParif will contribute its noise expertise. PEMB will be the guarantor of local needs and the territory for experimentation. Gustave Eiffel University, as part of its research program, and IFPEN, as part of its mobility research and innovation program.



## A Pioneering Initiative

With AMELIA, Paris Est Marne&Bois has seized the opportunity to create one of the first dynamic cartographies based on frugal AI, combining noise, air and mobility. This project responds to the Ministry's desire to create frugal AI ambassadors on a European scale.

# A partnership ecosystem: expertise at the service of cities in the region



Department of Environment and Ecological Transition – PCAET :  
sandra.desousa@pemb.fr - +33 (0)1 48 71 52 93 - +33 (0)7 70 22 02 30  
frederique.marquet@pemb.fr - +33 (0)1 84 23 75 48 - +33 (0) 6 46 49 75 82

For more informations :

<https://greentechinnovation.fr>

<https://www.ign.fr>



Intercommunalité Paris Est Marne&Bois  
1 Place Uranie  
94340 Joinville-le-Pont  
+33 (0)1 48 71 59 00 - [accueil@pemb.fr](mailto:accueil@pemb.fr)  
[www.parisestmarnebois.fr](http://www.parisestmarnebois.fr)